



BackupEDGE

FOR XINUOS

SCO OpenServer™ 6 (6.0.0/6.0.0V)

SCO OpenServer 5 (5.0.5-5.0.7/5.0.7V)

UnixWare® 7 (7.1.4, 7.1.4+)

Includes "Definitive" Series (D1M0, D2M0, D2M1)

SECURE BACKUP AND DISASTER RECOVERY SOFTWARE FOR UNIX®

FEATURES

Data Format

- ▲ Standards-based (with extensions). Derived from IEEE 1003.1-2001.
- ▲ 5,000 Character Pathnames - longest available.
- ▲ Full-File Checksum - assures file integrity when using newer media.
- ▲ Compression - 9 selectable levels for tuning space vs. performance.
- ▲ Access Control List (ACL) support.

Encryption

- ▲ Standards-based - file level.
- ▲ 256bit randomly generated archive key, super-encrypted with 2048bit public/private key pair.
- ▲ Complete key management system.
- ▲ Optional add-on.

Database Support

- ▲ MySQL™ Hot Backups (not available on OpenServer 5).

Device Support

- ▲ Tape Drives, Changers, Autoloaders, and Libraries.
- ▲ Blu-ray Disc (BD-RE), DVD, and CD burners.
- ▲ SharpDrive™ support for USB flash/hard drives and cartridge hard disks like RDX / GoVault (D2D). UW7/OSR6
- ▲ Re-startable FTP/FTPS/NFS Network-attached-storage (NAS) backups to any device, server or appliance.
- ▲ **Amazon S3** (and compatible) worldwide *Region* support for cloud storage backups. Signature v2 and v4. Includes **Google Cloud Storage**.

Disaster Recovery

- ▲ Automated OneTouch™ Restore.
- ▲ Create boot image on optical media or Tape (OBDR).
- ▲ Bare Metal DR from any media type (except NFS on UW7/OSR6).
- ▲ Create "Bootable Backups" on optical media and OBDR compatible tape drives.
- ▲ Remote management available via network or modem connection.



Microlite BackupEDGE™ has been protecting

UNIX operating systems since 1987.

It is an enabling technology, combining class-leading storage device support, data format, encryption, and disaster recovery technologies that have a natural synergy with the newest features of each operating system.

BackupEDGE allows UNIX users to deploy the storage that best suits their needs. Our exclusive



Transparent Media™ Technology

ensures that, from Blu-ray Disc™ to DVD to Tape, users can pick the device and interface that make the

most sense for their environment. NAS, cloud storage, and (D2D) backups allow for more frequent data backups, and BackupEDGE provides immediate support for these highly popular storage methods.

We've all seen the news stories over the last few years about the nightmares that have been caused by either system crashes where no backup exists, or of lost or stolen data backups containing confidential data. BackupEDGE solves both problems by creating verified data backups with easy disaster recovery capability and available high strength encryption and key management.

Written to FIPS standards, BackupEDGE encryption removes the liability (and embarrassment) normally associated with lost or stolen archives.

KEY FEATURES AND BENEFITS

BACKUP/VERIFY/RESTORE

User Interface

The user interface renders itself in one of two ways:

- ✧ As a Web Services Interface to any PC with a Java-enabled browser.
- ✧ As a standard character interface on the console or a terminal.

All functions work identically in both character and graphical mode. Custom themes and colors may be designed.

Installation

An *Installation Wizard* detects and configures tape drives, libraries, autochangers, and optical drives automatically. A default backup schedule (full system backup) is created. A scan for virtual/sparse files may be performed.

Enhanced Data Format

The data format is standards-based and extensible. It archives all UNIX file types, and has a 5,000 character pathname limit, providing more flexibility than the 99 to 1024 character limits that restrict most other products. ACLs (Access Control Lists) are supported under both OpenServer 6 and UnixWare 7.

Flexible Scheduler

Domains are "things to be protected". The default *Domain* is "the entire system". Additional *Domains* may be created for purpose-built backups. Examples might be "the accounting system" or "the source code directories". *Domains* can define before and after backup "actions", files/directories to be excluded, and more. Our *Scheduler* allows easy creation and protection of multiple *Domains*.

Multiple Backup Types

Master Backups (backup everything), *Differential Backups* (backup everything since the last *Master Backup*) and *Incremental Backups* (backup everything since the last *Differential Backup* or last *Incremental Backup*) are all supported.

Strong Encryption Option

BackupEDGE uses 256 bit AES data encryption to secure your data. Each archive has its own randomly generated encryption key, which itself is encrypted and protected by a 2048 bit public/private key pair. You may choose to encrypt either selected critical files, or entire archives if you wish. Full integration ensures that no other product functionality is lost when using encryption.

Powerful Compression

Backups to optical media and legacy or low-priced tape drives place special demands on backup software. *BackupEDGE* has powerful ZLIB based compression capable of storing far more data per archive than competing products. Fully integrated, including encryption, it is even beneficial when using devices with hardware compression.

TapeAlert™ Support

Many tape drives support the industry standard *TapeAlert* diagnostics system. *BackupEDGE* detects and reports *TapeAlert* messages, allowing device and media errors to be dealt with **before** any critical data is lost.

Fast File Restore™ / Instant File Restore™

Files and directories may be restored at maximum possible speed, as *BackupEDGE* can directly manipulate tape devices with *Quick File Access* capabilities, optical, NAS, Flash and removable hard disk devices with direct access commands, to provide the industry's fastest available one-pass restores.

Archive Verification

An un-verified backup is not a backup at all. *BackupEDGE* combines full file checksum verification (can be done anytime) with the ability to do a byte-by-byte comparison between archived files and original files, ensuring that your archived data will be there when you really need it. Checksum verification is crucial when using non-tape media, as no ECC correction is available.

Advanced Reporting and Notification

Reporting, logging and notification are a critical part of a structured, reliable backup scheme. *BackupEDGE* allows a virtually unlimited number of recipients to get printed and emailed messages on two levels: those who get notified of the status of all *Scheduled Jobs*, and those who get notified only in the event of failures and warnings. Mail messages can be configured as text or HTML, or even set up for SMS text messaging or numeric pagers, on a per-schedule / per-user basis.

©2001-2018 by Microlite Corporation • All Rights Reserved • 03.02.01b6 - 2018/10/22 Xinuos
Trademarks and registered trademarks are those of their respective owners.

BARE METAL DISASTER RECOVERY

Theory

BackupEDGE comes bundled with *RecoverEDGE™*, our bare-metal disaster recovery component. *RecoverEDGE* allows a system to be recovered from a hard disk failure or other catastrophic data loss without having to re-install the operating system, add device drivers, etc. Simply boot from the media (created on *your system with your kernel and your system configuration*) into the *RecoverEDGE* disaster recovery menu system and automatically (or manually if desired) configure your hard drives and restore data from your last backup. Fully supports restores from encrypted archives.

Boot Media Choices

RecoverEDGE can create boot media on optical (CD / DVD and Blu-ray Disc) media, and as ISO images to support virtual servers. These work directly with your system backups to recover systems.

Bootable Backups

You may also create nightly system backups which are fully bootable for disaster recovery on optical media. If your tape device supports *OBDR™*, you may also make bootable nightly backup tapes, meaning that your backup media is also your disaster recovery media.

Remote Recovery

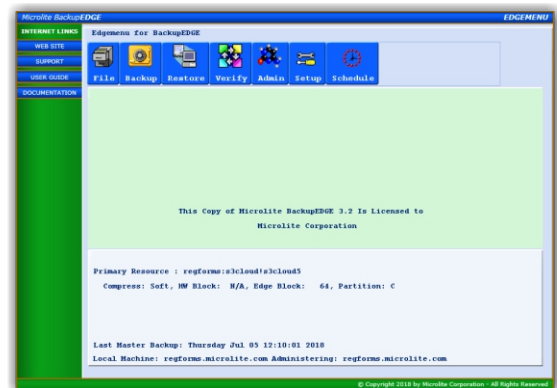
Boot media contain a full *network stack and modem support*. This means that if the local user can simply boot into the *RecoverEDGE* menu, an administrator can telnet or modem into the system from anywhere in the world to perform a recovery.

Recovery From Network Backups

Complementing the remote backup capabilities of *BackupEDGE*, *RecoverEDGE* can restore from NAS and Amazon S3 backups, providing a complete backup and disaster recovery solution for systems without attached storage, such as rackmount servers and notebook computers.

BackupEDGE is available world wide for a variety of UNIX and Linux operating systems. Please check the Microlite Corporation web site for current platform availability and device compatibility. No-charge, 60 day evaluation copies may be downloaded. After 60 days, a commercial or non-profit /charity license must be purchased for continued operation.

¹ Device support is operating system dependent.



724-375-6711 • 888-257-3343 • <http://www.microlite.com>